



STEEL DETAILING & DESIGN SERVICES

EXACT DETAILING LTD.

Steel Detailing at Exactly the Right Price!



Background

Founded in 2008, Exact Detailing has provided accurate, timely and cost effective steel detailing and design services on a multitude of projects located across North America. Exact maintains three offices in British Columbia, Canada which allows better responsiveness and timeliness to meet our customers' demands.

Exact's teams, including Project Managers, Steel Detailers and Engineers deliver high quality products, swiftly and at market prices.

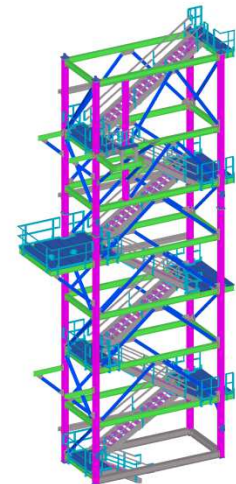
Last year (2016), using 3D Tekla Structures software Exact consumed ninety thousand man Hrs and detailed approximately 36,000 tons. For the current year, Exact expects to detail over 40,000 tons and utilize over one million man hrs. With current staffing Exact can detail on average 3,300 tons per month.

Clients

Exact provides services to architects, engineers, general contractors and fabricators in North America, South America and Australia.

Exact's success is built on accessibility, flexibility and accountability; maintaining strategic alliances with dependable detailing, engineering and architectural firms, and often partnering with other stakeholders to achieve high quality results.

Detailers at Exact provide individualized service that is responsive to the dynamic world of construction. This distinguishes Exact from other detailing companies and provides customers with a greater advantage in today's competitive global economy.



VICTORIA HEAD OFFICE
UNIT #201 1821 COOK ST
VICTORIA, BC V8T 3P5

NANAIMO OFFICE
3064 BARONS RD
NANAIMO, BC V9T 4B5

SURREY OFFICE
17660-65A AVENUE, SUITE 201
SURREY, BC V3S 6N4

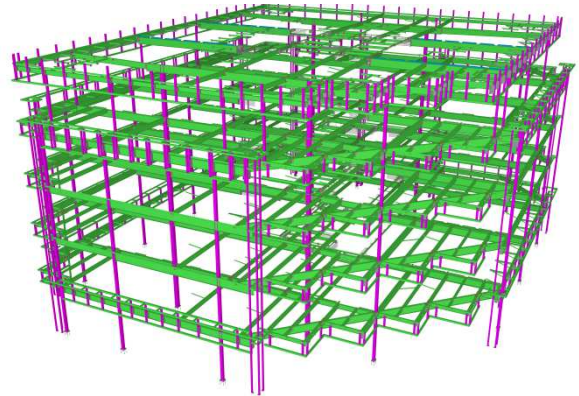


Quality

Exact's teams are comprised of project managers, technical detailers, and checkers. Team members possess a variety of drafting and steel detailing backgrounds with extensive experience in all scales of structural projects and comprehensive knowledge of 3D modeling. Our internal quality assurance program is integrated into our customized workflow, allowing control point monitoring throughout the project. Combining this with knowledgeable and experienced employees, allows Exact to successfully meet the expected and unexpected challenges of steel detailing. Numerous employees are Registered Steel Detailers with the National Institute of Steel Detailers (NISD).

Services

- 3D modeling
- Customized fabrication/shop drawings
- General arrangement drawings
- Anchor bolt drawings
- Fieldwork drawings
- Project reports- material list, bolt list etc.
- Advanced bill of material
- BIM coordination and clash detection
- Trimble points for fabrication or erection
- Ability to Interface with alternative software
- Estimating, models and weights
- Customized reports and material lists
- Automated RFI database system
- CNC, DXF, DSTV & Fabtrol files
- Architect & Engineer liaison
- Pre engineering detailing & design
- Project coordination & management



JEFF ARNOTT - OWNER/PRESIDENT
PHONE: 250 590 5244 EX. 201
EMAIL: JEFF@EXACTDETAILING.COM

PHONE: 250 590 5244
FAX: 250 380 3712
WEBSITE: EXACTDETAILING.COM

ESTIMATING
PHONE: 250 590 5244 EX. 208/308/312
EMAIL: ESTIMATING@EXACTDETAILING.COM