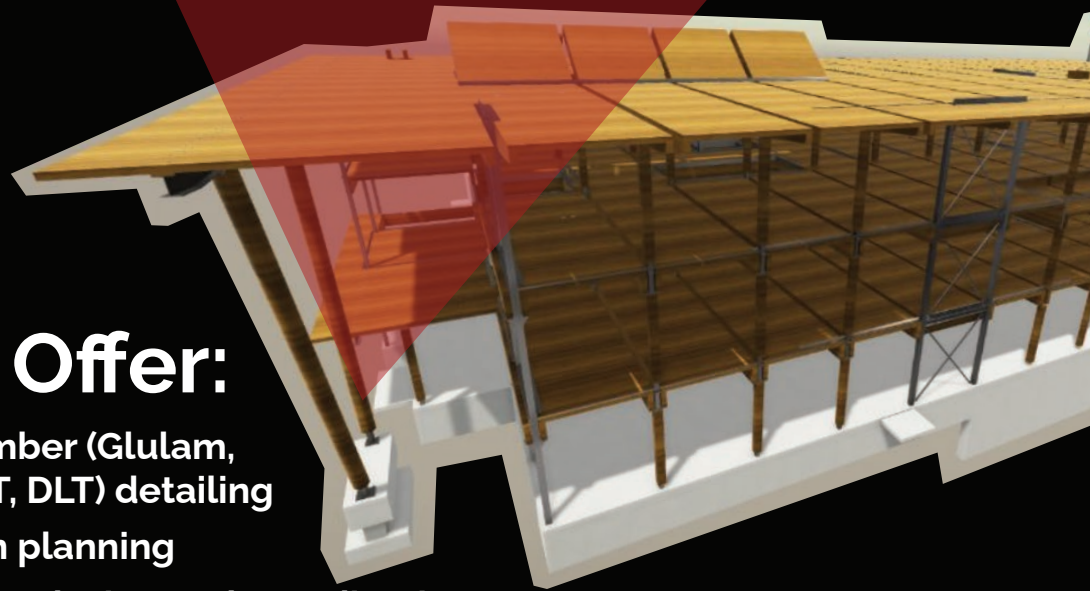
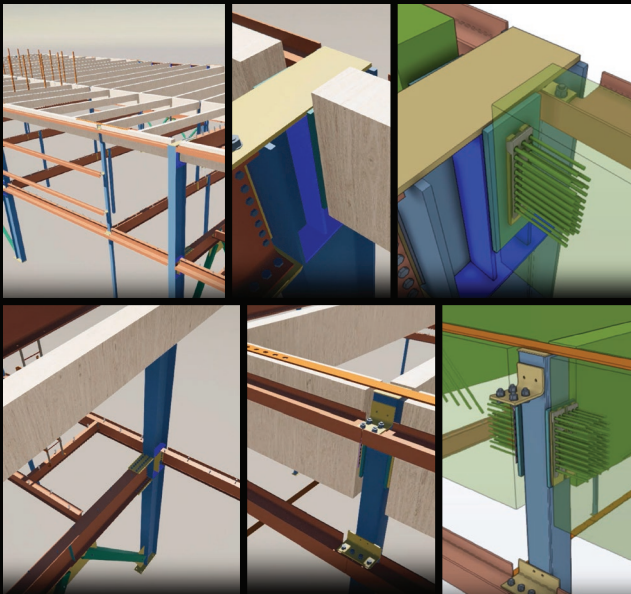


We Offer:

- ✓ Mass timber (Glulam, CLT, NLT, DLT) detailing
- ✓ Erection planning
- ✓ Detailing, design and coordination of steel connections and concrete foundations
- ✓ Advanced BIM collaboration and coordination
- ✓ Model based and transparent process
- ✓ Accountability and flexibility



Contact Us

250 590 5244
estimating@exactdetailing.com

Victoria, Port Alberni, Burnaby,
Surrey, Edmonton, Calgary,
Montreal



Mass Timber Detailing and Engineering

WHY CHOOSE US?

Exact Detailing specializes in providing top-notch detailing and project management services through leading 3D construction modeling technology. Proficient in mass timber, steel and concrete detailing, our staff brings expertise from residential, commercial, and industrial backgrounds. By combining superior technology with diverse human expertise, we ensure every project meets the highest standards of precision and technical compliance. We believe with our help your staff can focus on the essentials while we take on much of the manual work you have. If you need horsepower and precision, we are here to help you.



Advanced Technology

Our team builds 3D multi-material models for every project, with a very high level of detail. Every part, bolt, screw, weld, cut and rebar gets modeled to ensure accuracy and detailed shop outputs, which facilitates thorough cost estimation and efficient supply chain management. Using models and other design information from other project participants in full BIM process, we can minimize project risk. For most structural modeling and detailing we use Trimble Tekla Structures, the gold standard of detailed structural information. Our tools can also transfer models with other programs (ie: Cadwork and Revit). When your project requires site surveys and laser scanning, we can assist using our own scanners and total stations. We rely on our skilled use of a variety of tools, both in-house and commercially available solutions (like Trimble Connect and Autodesk Construction Cloud), for effective project coordination.



Open Communication

With the capability to detail 10,000 tons a month across North America, South America, Europe and Australia, we are your trusted source for high-quality and timely detailing and project management services. Understanding the profound implications of project delays, we respond swiftly, leveraging our extensive industry experience and large team of highly trained experts. Our technology allows you to see inside our projects to follow real time status of your project. We believe openness and transparency builds better project teams and more successful project outcomes. RFI's, change management, transmittals and bills of materials are literally at your fingertips.

Versatility +Reliability



Our team continues to grow in size and expertise. Members of Exact Detailing have worked in all types and size of projects using several different construction materials. We believe this makes us one of the best teams in business to work with. Whether the project is basic or complex, each project is approached with precision, attention to detail, and a commitment to meeting customer expectations and technical requirements. Exact Detailing is ready to serve you when schedules are tight and details are constantly changing. We are the extra engine you can turn on when needed. Let us help you reach the finish line, on time and on budget!

